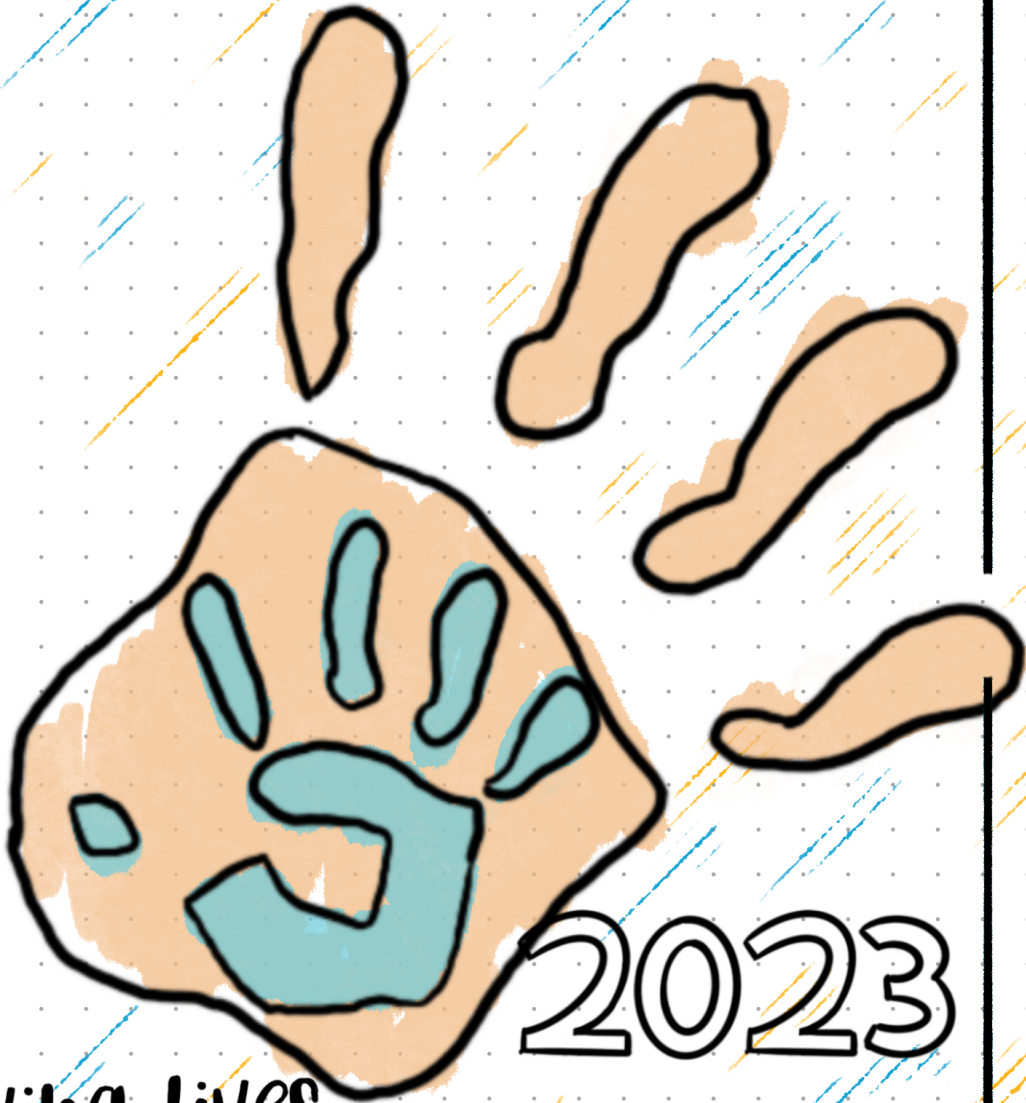


TTL Annual Report



2023

Saving Lives,
One Child at a Time

Table of Contents

- 3 INTRODUCTION
- 4 YEAR IN REVIEW
- 5 IMPACT
- 6 SAFE HOME
- 7 OUTREACH
- 8 ECD
- 9 NUTRITION CLUB
- 10 VEGETABLE PRODUCTION
- 11 IMPACT STORY
- 12 GROWTH IN 2023
- 13 FINANCE
- 14 THANK YOU
- 15 ACKNOWLEDGEMENTS

Introduction

3



AS WE REFLECT ON THE YEAR THAT HAS PASSED, TTL IS GRATEFUL FOR THE UNWAVERING SUPPORT OF OUR DONORS AND PARTNERS. IN 2023, WE CONTINUED TO MAKE A LASTING IMPACT ON THE LIVES OF VULNERABLE CHILDREN AND FAMILIES IN OUR COMMUNITY. JOIN US AS WE REVISIT THE MILESTONES AND MOMENTS THAT DEFINED OUR JOURNEY, TOGETHER.



Year in Review

4



2023

ACHIEVEMENTS

S	M	T	W	TH	F	S
	1	2	3	4	5	6
7	8	9	10	11	12	13
14	15	16	17	18	19	20
21	22	23	24	25	26	27
28	29	30	31			

15,040

MEALS GIVEN
TO KIDS IN THE
SAFE HOME



104,760

LESOTHO
NUTRITION
INITIATIVE MEALS
DISTRIBUTED

S	M	T	W	TH	F	S
					1	2
3	4	5	6	7	8	9
10	11	12	13	14	15	16
17	18	19	20	21	22	23
24	25	26	27	28	29	30
31						

225

WOMEN
EDUCATED AND
EMPOWERED



538

OUTREACH
FOOD
PACKAGES
DISTRIBUTED

S	M	T	W	TH	F	S
					1	2
3	4	5	6	7	8	9
10	11	12	13	14	15	16
17	18	19	20	21	22	23
24	25	26	27	28	29	30
31						

S	M	T	W	TH	F	S
					1	2
3	4	5	6	7	8	9
10	11	12	13	14	15	16
17	18	19	20	21	22	23
24	25	26	27	28	29	30
31						

Impact

5

NEW CLIENTS
ENROLLED

125

CHILDREN
CARED FOR IN
THE SAFE
HOME

32

HOME VISITS
CONDUCTED

622

KIDS SERVED
THROUGH ECD

318

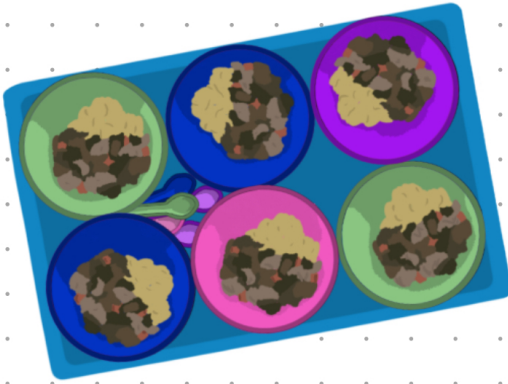
CHILDREN
GRADUATED
FROM OUR
PROGRAM

100



Safe HOME

6



AT TTL, SAFETY AND SECURITY IS AT THE CORE OF OUR MISSION. THE TTL SAFE HOME OFFERS TEMPORARY REHABILITATION FOR CHILDREN FACING SEVERE MALNUTRITION, SERIOUS HEALTH CONCERNS, OR THOSE WITHOUT ALTERNATIVE CARE OPTIONS. THIS YEAR, 32 CHILDREN BENEFITED FROM OUR EXCEPTIONAL 24-HOUR CARE, INCLUDING 6 DAILY NUTRITIOUS MEALS, DAILY VITAMINS, MEDICAL CHECK-UPS, AND AMPLE PLAYTIME FOR SOCIAL AND MOTOR SKILL DEVELOPMENT. UPON REACHING A HEALTHY WEIGHT AND DEVELOPMENTAL MILESTONES, 29 CHILDREN WERE SUCCESSFULLY REUNIFIED WITH THEIR FAMILIES THROUGH OUR OUTREACH PROGRAM.



Outreach

7



TTL'S OUTREACH PROGRAM EXTENDS NUTRITION, HEALTHCARE, AND EDUCATIONAL SUPPORT TO FAMILIES THROUGHOUT MOKHOTLONG WITH CHILDREN IN NEED OF ASSISTANCE. THIS YEAR, WE WELCOMED 110 NEW CLIENTS INTO OUR PROGRAM, CONDUCTED HEALTH ASSESSMENTS. WE HAVE ALSO DELIVERED FOOD PACKAGES AIMED AT COMBATING MALNUTRITION DURING OUR **622** HOME VISITS, AND PERFORMED AN ADDITIONAL **400** HEALTH ASSESSMENTS OUTSIDE OF OUR CLIENTS' MONTHLY HOME VISITS, MEASURING THE HEIGHT, WEIGHT, AND MID-UPPER ARM

CIRCUMFERENCE OF EACH CHILD TO EVALUATE NUTRITIONAL STATUS. CELEBRATING SUCCESS, WE PROUDLY GRADUATED **92** CLIENTS FROM OUR OUTREACH PROGRAM, MARKING A POSITIVE STEP TOWARDS IMPROVED WELL-BEING FOR THESE FAMILIES.



TTL'S EARLY CHILDHOOD DEVELOPMENT PROGRAM STANDS AS A BEACON OF HOLISTIC SUPPORT FOR EDUCATION AND NUTRITION IN MOKHOTLONG TO CHILDREN UNDER THE AGE OF 5. COLLABORATING WITH LESOTHO NUTRITION INITIATIVE, WE PROVIDE CRUCIAL NUTRITIONAL SUPPORT TO 11 SCHOOLS, 5 OF WHICH WE'VE PROUDLY BUILT. AT THESE FIVE SCHOOLS, OUR INVOLVEMENT EXTENDS BEYOND NUTRITION; WE OFFER TUITION ASSISTANCE COVERING SCHOOL FEES, SUPPORT TEACHER SALARIES, INSTALL PLAYGROUNDS, AND CONTINUALLY ENHANCE THE LEARNING ENVIRONMENT. TO ENSURE HIGH EDUCATIONAL STANDARDS, WE CONDUCTED A TEACHER TRAINING MEETING AT THE BEGINNING OF THE SCHOOL YEAR, IMPLEMENTING AN ADVANCED CURRICULUM ACROSS ALL SCHOOLS. THROUGH OUR ECD PROGRAM, TTL MAKES STRONGER CONNECTIONS IN THE MOKHOTLONG COMMUNITY AND ENSURES THAT KIDS WHO NEED REFERRALS TO OUR SAFE HOME AND OUTREACH PROGRAM DO NOT FALL THROUGH THE CRACKS.

EARLY CHILDHOOD DEVELOPMENT



IN DECEMBER, A HEARTWARMING GRADUATION CEREMONY WAS HELD ON TTL'S CAMPUS, UNITING GRADUATES FROM OUR FIVE SCHOOLS. OUR COMMITMENT FURTHER EXTENDS TO WORKING WITH EACH SCHOOL ON GARDEN CULTIVATION, PROVIDING SOIL PREPARATION ASSISTANCE, AND EDUCATING THEM ON OPTIMAL GARDENING PRACTICES. THIS COMPREHENSIVE APPROACH REFLECTS OUR DEDICATION TO FOSTERING NOT ONLY EDUCATION BUT ALSO OVERALL WELL-BEING IN THE COMMUNITIES WE SERVE.

Nutrition Club

9

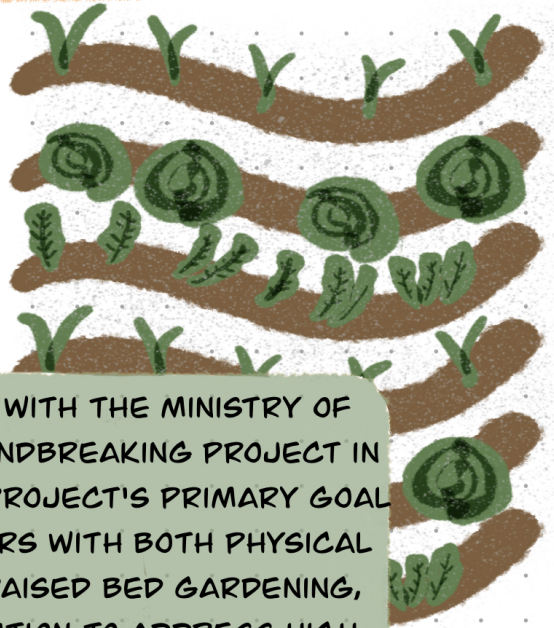


IN OUR NUTRITION CORNERS PROGRAM, WE GO BEYOND THE BASICS, ENGAGING IN MEANINGFUL DIALOGUE ABOUT THE VITAL ROLE OF PROPER NUTRITION. THROUGH WORKSHOPS ON PREPARING NUTRITIOUS MEALS, WE EMPOWER WOMEN WITH KNOWLEDGE THAT EXTENDS BEYOND THE KITCHEN. OUR GOAL IS TO SPARK A CHAIN REACTION OF EMPOWERMENT, WHERE THE WOMEN WE EDUCATE CAN, IN TURN, ENLIGHTEN AND EMPOWER OTHERS IN THEIR VILLAGES. THIS RIPPLE EFFECT CONTRIBUTES TO THE CREATION OF A WELL-INFORMED AND HEALTHY COMMUNITY. ADDING DEPTH TO OUR IMPACT, WE HOSTED 13 NUTRITION CLUB MEETINGS, BRINGING TOGETHER 225 CAREGIVERS FOR FURTHER EDUCATION AND EMPOWERMENT.



Vegetable Production

10



IN 2023, TTL IN PARTNERSHIP WITH THE MINISTRY OF AGRICULTURE, INITIATED A GROUNDBREAKING PROJECT IN MATSOAING AND HA TSOEU. THE PROJECT'S PRIMARY GOAL IS TO EQUIP COMMUNITY MEMBERS WITH BOTH PHYSICAL AND EDUCATIONAL TOOLS FOR RAISED BED GARDENING, OFFERING A SUSTAINABLE SOLUTION TO ADDRESS HIGH RATES OF FOOD INSECURITY. BY PROVIDING THE MEANS TO PREPARE, PLANT, AND HARVEST A VARIETY OF VEGETABLES, WE AIM TO ENHANCE NUTRITIONAL STATUS WITHIN HOUSEHOLDS. BEYOND FOSTERING HEALTHY DIETARY HABITS, THE PROGRAM PROMOTES SELF-RELIANCE AND ENVIRONMENTAL CONSCIOUSNESS. PARTICIPANTS RECEIVE COMPREHENSIVE EDUCATION ON THE BENEFITS OF FRESH VEGETABLES AND PROPER NUTRITION ALONG WITH TRAINING ON VARIOUS METHODS OF CANNING AND PRESERVING THEIR HARVEST SO THAT IT WILL LAST THEM THROUGH THE WINTER, ENSURING GOOD NUTRITION ALL YEAR LONG. THIS HOLISTIC APPROACH ENSURES THAT COMMUNITY MEMBERS NOT ONLY GROW NUTRIENT-RICH PRODUCE BUT ALSO ACQUIRE THE SKILLS TO PREPARE WHOLESOME MEALS, EMPOWERING THEM TO LEAD HEALTHIER LIVES AND CONTRIBUTE TO THE OVERALL SUSTAINABILITY OF THEIR COMMUNITIES.

Impact Story



AT TTL'S SAFE HOME PROGRAM, A RESILIENT YOUNG GIRL EMBARKED ON A REMARKABLE JOURNEY OF TRANSFORMATION. KAT'S JOURNEY IS INDEED A TESTAMENT TO THE VITAL ROLE THAT TTL PLAYS IN SUPPORTING CHILDREN FACING COMPLEX HEALTH CHALLENGES. THE STORY REFLECTS THE HEARTBREAKING REALITY OF HER MOTHER'S MULTIPLE ILLNESSES AND THE COLLECTIVE EFFORT TO PROVIDE SUPPORT AT HOME.

TRAGICALLY, HER MOTHER PASSED AWAY, AND KAT'S HEALTH, DETERIORATING WITH RESPIRATORY INFECTIONS AND TB, REQUIRED A MOVE TO THE SAFE HOME FOR SPECIALIZED CARE.

AT THE SAFE HOME, KAT RECEIVED THE DEDICATED ATTENTION REQUIRED FOR HER COMPLEX HEALTH CONDITIONS. FOR 7 MONTHS IN OUR CARE, SHE RECEIVED NUTRITION AND MEDICAL SUPPORT FOR HER WELL-BEING.

FINALLY, SHE WAS REUNIFIED WITH HER FAMILY. MOREOVER, THE EMPHASIS ON REUNIFICATION WITH HER SIBLINGS HIGHLIGHTS TTL'S COMMITMENT NOT ONLY TO INDIVIDUAL CARE BUT ALSO TO PRESERVING THE BONDS THAT ARE CRUCIAL FOR A CHILD'S WELL-BEING. BY PROVIDING A SAFE AND SUPPORTIVE ENVIRONMENT, TTL CONTRIBUTED TO THE REUNIFICATION OF KAT WITH HER SIBLINGS, FOSTERING A SENSE OF FAMILIAL CONNECTION.



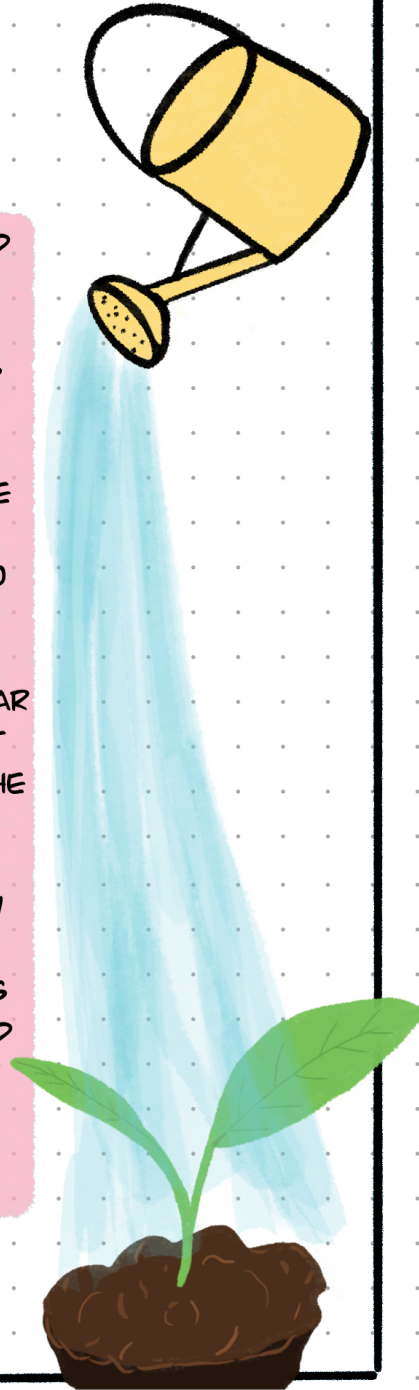
KAT'S STORY SERVES AS A POIGNANT EXAMPLE OF HOW TTL BECOMES A BEACON OF HOPE AND CARE FOR CHILDREN FACING COMPLICATED ILLNESSES AND CHALLENGING CIRCUMSTANCES. THE ORGANIZATION'S ROLE EXTENDS BEYOND MEDICAL CARE, ENCOMPASSING EMOTIONAL SUPPORT, REUNIFICATION EFFORTS, AND A COMMITMENT TO THE OVERALL WELL-BEING OF THE CHILDREN UNDER ITS CARE.

Growth in 2023

12

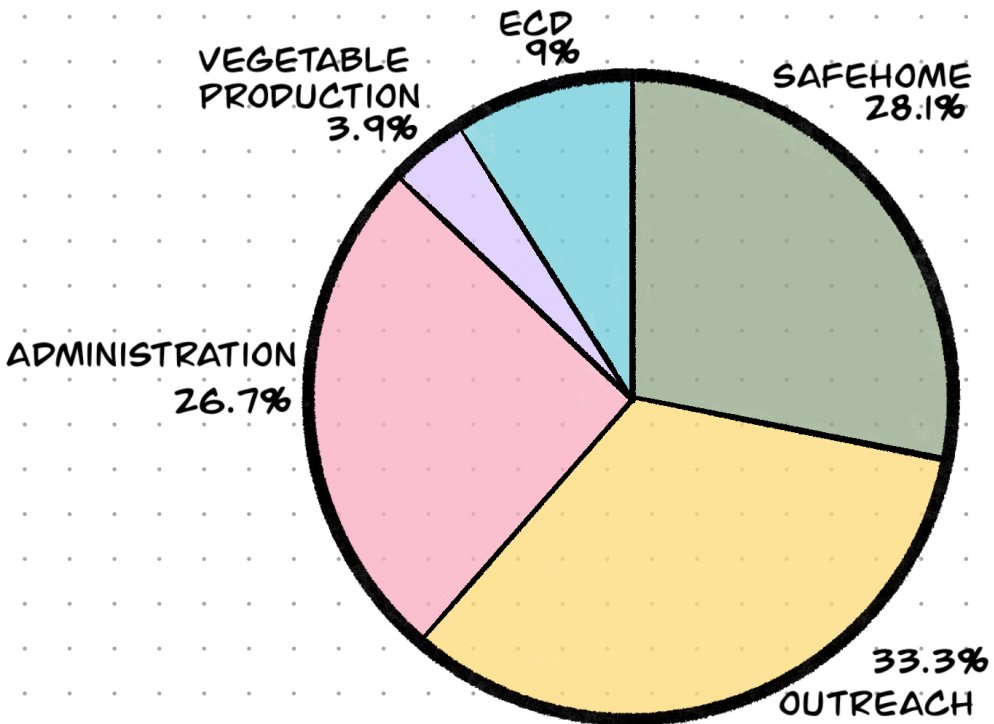


IN A YEAR MARKED BY REMARKABLE GROWTH AND IMPACTFUL INITIATIVES, TTL HAS WITNESSED UNPRECEDENTED SUCCESS AND COMMUNITY TRANSFORMATION. OUR STRATEGIC PARTNERSHIPS HAVE PROPELLED US TO NEW HEIGHTS IN DONOR ENGAGEMENT, ENRICHED OUR PROGRAMS, AND OPENED AVENUES FOR INNOVATION; OUR SAFE HOME AND OUTREACH PROGRAMS CONTINUE TO MAKE SIGNIFICANT STRIDES IN PROVIDING ASSISTANCE TO CHILDREN THROUGHOUT THE DISTRICT IN NEED OF DIRECT SUPPORT. OUR EARLY CHILDHOOD DEVELOPMENT PROGRAM HAS BLOSSOMED THIS YEAR AS WE HAVE EXPANDED OUR IMPACT AND SUPPORT WITHIN THE SCHOOLS ALLOWING MORE CHILDREN THE OPPORTUNITY TO GO TO SCHOOL; OUR NUTRITION CLUBS PROGRAM CONTINUES TO EDUCATE CAREGIVERS ABOUT NUTRITION, INTRODUCING NEW AND EXCITING RECIPES INTO THE PROGRAM, AND FINALLY; OUR VEGETABLE PRODUCTION PROGRAM IS HELPING EMPOWER COMMUNITIES TO COMBAT FOOD INSECURITY. WE HAVE GROWN SO MUCH THIS PAST YEAR, AND LOOK FORWARD TO IMPLEMENTING EVERYTHING WE'VE LEARNED TO MAKE OUR NEXT YEAR EVEN BETTER.



Finance

13



BUDGET LINE ITEM

EXPENDITURE

ADMINISTRATION

R 830,472.42
USD 44,004.50

OUTREACH

R 1,075,434.16
USD 56,984.37

SAFEHOME

R 908,418.39
USD 48,134.65

VEGETABLE
PRODUCTION

R 124,991.00
USD 6,622.93

ECD

R 292,313.68
USD 15,488.91

**TOTAL EXPENDITURE
FOR 2023**

**R 3,231,629.65
USD 171,235.39**

THANK YOU

14

REFLECTING ON THE YEAR THAT HAS PASSED AT TTL, WE FIND OURSELVES FILLED WITH PRIDE AT THE NUMEROUS ACHIEVEMENTS WE HAVE ACCOMPLISHED. OUR HARDWORKING STAFF, CONTRIBUTING TO OUR MISSION EACH DAY, DESERVES COMMENDATION AS WELL AS ALL THE CAREGIVERS IN MOKHOTLONG, STEADFASTLY PARTNERING WITH US TO ENHANCE THE HEALTH OF THEIR CHILDREN. THE NOTABLE PROGRESS OBSERVED IN THE CHILDREN WE SERVE IS A SOURCE OF PROFOUND PRIDE. AT TTL, OUR CORE COMMITMENT IS ADVANCING THE HEALTH AND OVERALL WELL-BEING OF ALL CHILDREN IN OUR CARE.



ACKNOWLEDGEMENTS

15

TTL'S FINANCIAL PARTNERS

- AKTIONSGRUPPE GUMMERSBACH FÜR DIE WELTHUNGERHILFE/ INITIATIVE FÜR KINDER IN LESOTHO
- ELMA PHILANTHROPIES
- DOVETAIL FOUNDATION
- LESOTHO NUTRITION INITIATIVE
- THE TINY LIVES FOUNDATION
- TTLF INDIVIDUAL DONORS
- WATERLOO FOUNDATION
- WHITE BEAR LAKE ROTARY, MINNESOTA
- OTHER FOUNDATIONS THAT WISH TO BE KEPT ANONYMOUS



THANK YOU TO
EVERYONE WHO
SUPPORTS OUR
MISSION!

TTL'S PARTNERS IN LESOTHO

- NUTRITION COORDINATING OFFICE IN MOKHOTLONG
- MINISTRY OF AGRICULTURE
- MINISTRY OF HEALTH
- MINISTRY OF SOCIAL DEVELOPMENT