

Saving lives one child at a time



Why do we need your help right now?

The Touching Tiny Lives Foundation (TTLF) raises funds to support TTL's lifesaving work with children and families in Lesotho. TTL relies on these finances to provide medicine and food for the children, education and training for caregivers, and staffing.

Our support is critically important due to Lesotho's current drought. Many families are experiencing a food crisis, leading to widespread malnutrition among children.

You can provide this life-saving care. Help us raise \$250,000 in 2017!
To donate online please visit www.touchingtinylives.org/donate/

Why Touching Tiny Lives?

Lesotho is a small, mountainous country in southern Africa with a stunning landscape and a welcoming culture. Unfortunately, it also suffers from high rates of poverty, the second highest HIV prevalence in the world, and rampant malnutrition. An estimated 120,000 orphans and 41,000 children are living with HIV, and up to 44% of its children are chronically malnourished.



TTL is the only organization exclusively dedicated to caring for orphaned and vulnerable children in the rural, mountainous districts where we work. We support children affected by HIV/AIDS and ensure our clients are able to grow, develop, and thrive.

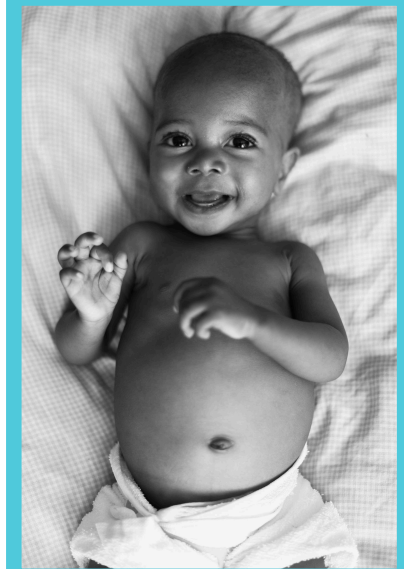
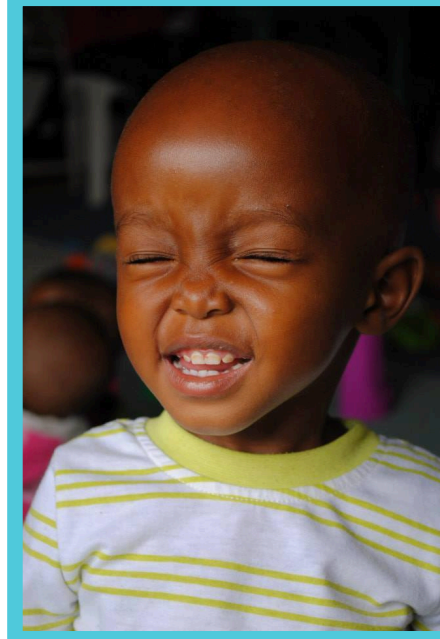
TTL's operations in Lesotho are entirely managed by Basotho men and women, from the Managing Director, to the safehome caregivers, to the outreach workers in the field. TTL's staff are from the communities they serve and are uniquely qualified to understand the risks and needs of these children and their families. The team has created a deep trust locally that will support sustainable services well into the future.

TTL relies on funding from TTLF, a network of communities and individuals in North America dedicated to raising funds, spreading awareness, and providing support to our Basotho partners.

How will your support help?

A few examples of what your donation means in Lesotho:

- \$5** One bag of powdered milk gives a malnourished child the vitamins essential to a balanced diet for one month
- \$10** One night stay at the hospital for caregivers who are supporting children in critical care
- \$40** Two tins of infant formula provide nutritious meals for one month to babies who can no longer breastfeed
- \$55** Two full tanks of fuel allow outreach services to conduct an average of 25 home visits in a week
- \$75** Water supply for a month at the safehome so that clothes, blankets, and children can be washed and cared for
- \$100** Electricity to keep the babies warm and lights on for nighttime caregivers for a month
- \$150** Monthly phone/internet connections at the TTL campus help us reach caregivers, families, and donors/partners with news
- \$200** A month's worth of hygiene materials to support the strict infection prevention practices we have in place
- \$300** Food packages for one child for a year, providing fully balanced meals in the face of drought and severe food shortages
- \$1,850** One-year salary for a safehome caregiver, who work day and night to make sure our children are fed, clean, and cared for



What did you help us do in 2016?



1,235 outreach visits made to children's homes to provide nutritional and medical support, as well as training to caregivers



1,976 children assessed at Outreach Program site visits



172 new children identified and served by TTL



142 children who reached health and stability and successfully graduated from the Outreach Program



41 children rehabilitated in the safehome



82 clinic/hospital visits made possible through TTL financial support



287 caregivers supported by TTL in their position as caregivers

249 children supported in 2016

2,119 children served since TTL's founding in 2004



A Note From Lesotho

Brandy Hart just finished a year of working at the TTL campus in Mokhotlong as the 2016-17 TTLF Fellow. TTLF created the Fellow role to provide on-site technical support to the TTL team. While a Fellow, Brandy supported TTL's day-to-day operations, grant writing, donor and partner communications, client tracking, and special project development. Brandy joined us after working for two years in the neighboring Thaba Tseka district.

I was first introduced to Lesotho as a Peace Corps volunteer in October 2013. It was dry, there was dust everywhere, and I woke up to donkeys braying and roosters crowing. Quickly charmed by the eccentricities of this place and its people, I knew I was right where I wanted to be.

Two years later and still charmed, my journey in Lesotho brought me to Touching Tiny Lives - a tiny non-profit in the mountains of Lesotho filled with great staff members and an even greater mission. A mission that deserves much more recognition than it receives.

One interaction with a graduated client from several years ago was a highlight during my time as TTLF Fellow. I met her through a photography project we were initiating. She was in grade 7 and smiled when she learned who I was and who I worked for. "Kea leboha kao fela" she said. Thank you for everything. Curious about her client history, I went digging in TTL's database.

This beautiful 12-year-old girl was brought to TTL severely malnourished at the age of two. It was then that I was able to conceptualize the impact TTL is making on children who, more often than not, may not have had a chance otherwise.

Poverty and its related symptoms are very real for Basotho children, especially in the highlands. I am thankful that for one year I was not only exposed more to this reality, but also a part of a team that works hard with the little resources they have to make life better.

Pictured at right: Brandy with the TTL graduate

